

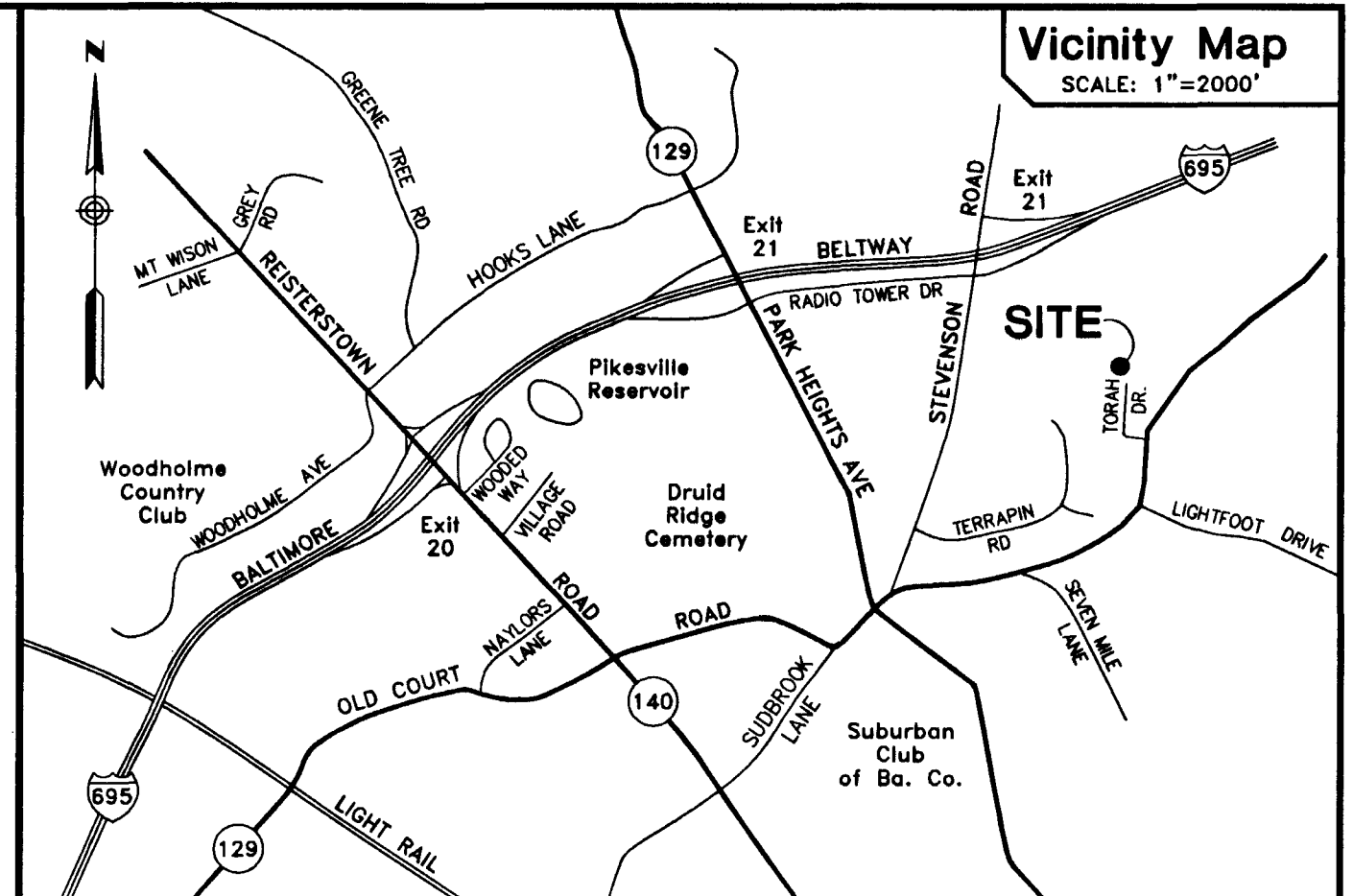
MCS-NAD 83

Notes:

Building B of Stevenson Commons Condominium is located on a part of the "Reserved Area" of Lot 6 of the Beth Tfiloh Land Condominium as shown on the plat of that condominium. That portion of Land Unit 6 of the Beth Tfiloh Land Condominium which is outside of the Reserved Area shown on the Beth Tfiloh Land Condominium Plat is not part of the Stevenson Commons Condominium. Use of that area is under control of Beth Tfiloh Congregation of Baltimore City, which may use the area for parking or any other use permitted by Baltimore County and applicable private agreements.

This plat is recorded to show the division of 2 Apartment Units from Unit A, 7902 Brynmor Court, pursuant to Art. III (c) of the Condominium Declaration. Further subdivision of Unit A into additional numbered Units will be shown on subsequent amended plats.

For Building B Garage Plan, See Drawing No. C-15 (S.M. 27-78).
For Building B Cross Section, See Drawing No. C-22 (S.M. 27-85).



Owner's Dedication

The undersigned, owner of the property shown hereon adopts this condominium plat pursuant to the provisions and requirements of the Maryland Condominium Act, Real Property Article Title 11, Sections 11-101, et. seq., of the Annotated Code of Maryland, and assents to the described property being subjected to said condominium.

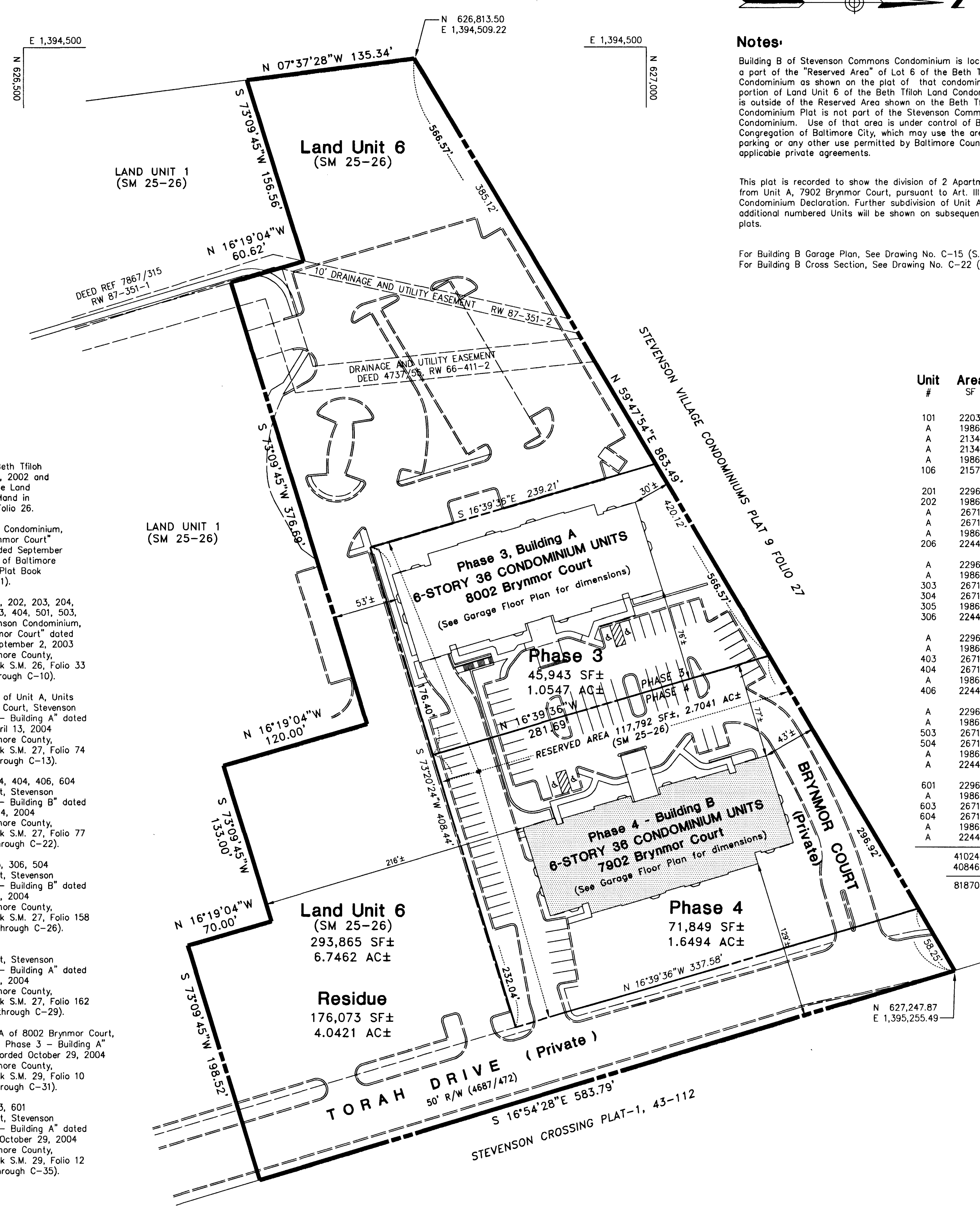
Stevenson Commons, LLC
By Stevenson Commons Howard, Inc., Managing Member

Howard S. Brown
Howard S. Brown, President

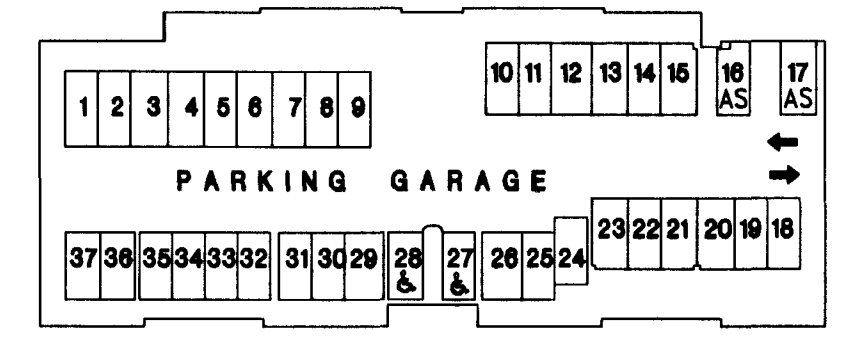
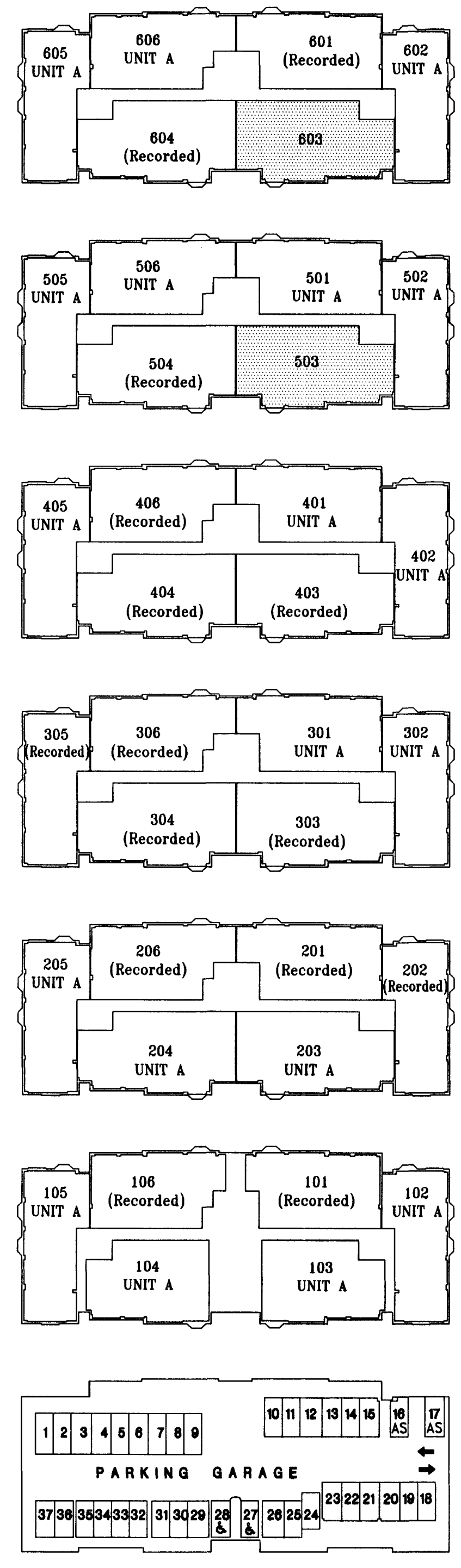
Surveyor's Certificate

I hereby certify that (1) this Plat, C-36 thru C-38, together with the applicable wording of the Declaration, is a correct representation of the condominium described, and (2) the identification and location of each unit and the common elements, as constructed, can be determined from them.

Long Van Bui
Long Van Bui, L.S.
MD. Reg. No. 20023



Unit #	Area SF
101	2203
A	1986
A	2134
A	2134
A	1986
106	2157
201	2296
202	1986
A	2671
A	1986
206	2244
A	2296
A	1986
303	2671
304	2671
305	1986
306	2244
A	2296
A	1986
403	2671
404	2671
A	1986
406	2244
A	2296
A	1986
503	2671
504	2671
A	1986
A	2244
601	2296
A	1986
603	2671
604	2671
A	1986
A	2244
41024	Total SF for Numbered Units
40846	Total SF for Unit A
81870	



- References:**
- Plat entitled "Condominium Plat, Beth Tfiloh Land Condominium", dated May 15, 2002 and recorded June 25, 2002 among the Land Records of Baltimore County, Maryland in Condominium Plat Book S.M. 25, Folio 26.
 - Plat entitled "Stevenson Commons Condominium, Phasing Plan, 7902 and 8002 Brynmor Court" dated August 25, 2003 and recorded September 2, 2003 among the Land Records of Baltimore County, Maryland in Condominium Plat Book S.M. 26, Folio 32 (Drawing No. C-1).
 - Plats entitled "Units 101, 102, 201, 202, 203, 204, 301, 303, 304, 305, 401, 402, 403, 404, 501, 503, 504, 603, 604, and Unit A, Stevenson Commons Condominium, Phase 3 - Building A, 8002 Brynmor Court" dated August 25, 2003 and recorded September 2, 2003 among the Land Records of Baltimore County, Maryland in Condominium Plat Book S.M. 26, Folio 33 through 41. (Drawing Nos. C-2 through C-10).
 - Plats entitled "First Amended Plat of Unit A, Units 206, 302 and 306, 8002 Brynmor Court, Stevenson Commons Condominium, Phase 3 - Building A" dated March 26, 2004 and recorded April 13, 2004 among the Land Records of Baltimore County, Maryland in Condominium Plat Book S.M. 27, Folio 74 through 76 (Drawing Nos. C-11 through C-13).
 - Plats entitled "Units 206, 303, 304, 404, 406, 604 and Unit A of 7902 Brynmor Court, Stevenson Commons Condominium, Phase 4 - Building B" dated April 4, 2004 and recorded April 14, 2004 among the Land Records of Baltimore County, Maryland in Condominium Plat Book S.M. 27, Folio 77 through 85 (Drawing Nos. C-14 through C-22).
 - Plats entitled "Units 101, 106, 305, 306, 504 and Unit A of 7902 Brynmor Court, Stevenson Commons Condominium, Phase 4 - Building B" dated July 9, 2004 and recorded July 15, 2004 among the Land Records of Baltimore County, Maryland in Condominium Plat Book S.M. 27, Folio 158 through 161 (Drawing Nos. C-23 through C-26).
 - Plats entitled "Units 106, 205 and Unit A of 8002 Brynmor Court, Stevenson Commons Condominium, Phase 3 - Building A" dated July 9, 2004 and recorded July 15, 2004 among the Land Records of Baltimore County, Maryland in Condominium Plat Book S.M. 27, Folio 162 through 164 (Drawing Nos. C-27 through C-29).
 - Plats entitled "Unit 103 and Unit A of 8002 Brynmor Court, Stevenson Commons Condominium, Phase 3 - Building A" dated September 9, 2004 and recorded October 29, 2004 among the Land Records of Baltimore County, Maryland in Condominium Plat Book S.M. 29, Folio 10 through 11 (Drawing Nos. C-30 through C-31).
 - Plats entitled "Units 201, 202, 403, 601 and Unit A of 8002 Brynmor Court, Stevenson Commons Condominium, Phase 3 - Building A" dated September 9, 2004 and recorded October 29, 2004 among the Land Records of Baltimore County, Maryland in Condominium Plat Book S.M. 29, Folio 12 through 15 (Drawing Nos. C-32 through C-35).

Prepared by:
LONG VAN BUI
Professional Land Surveyor
9243 Bellbeck Road
Baltimore, MD 21234
Phone: 410-661-3286
Cell: 410-262-5467
Fax: 410-668-3282
Email: lvbco@aol.com

Units 503, 603 and Unit A of 7902 Brynmor Court
STEVENSON COMMONS CONDOMINIUM
PHASE 4 - BUILDING B

DRAWING NO. **C-36**

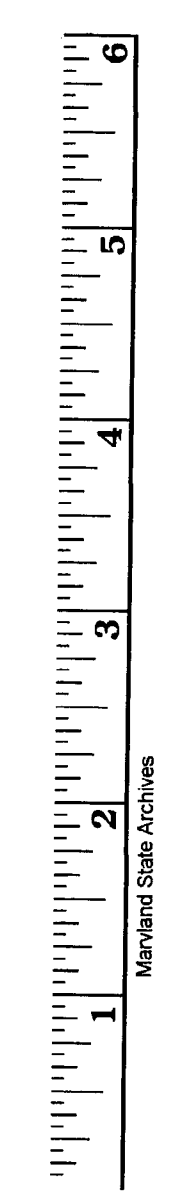
3RD ELECTION DISTRICT
SCALE: 1"=50'

BALTIMORE COUNTY, MARYLAND
DATE: DECEMBER 3, 2004

OWNER:
Stevenson Commons, LLC
Deed 16583-383

STEVENSON-PHASING.DWG

BALTIMORE COUNTY CIRCUIT COURT (Condominium Plats, PA) Condominium Book SM 29, pp. 57-59, MSA_51265_1521. Date available 2004/12/28. Printed 11/20/2024.

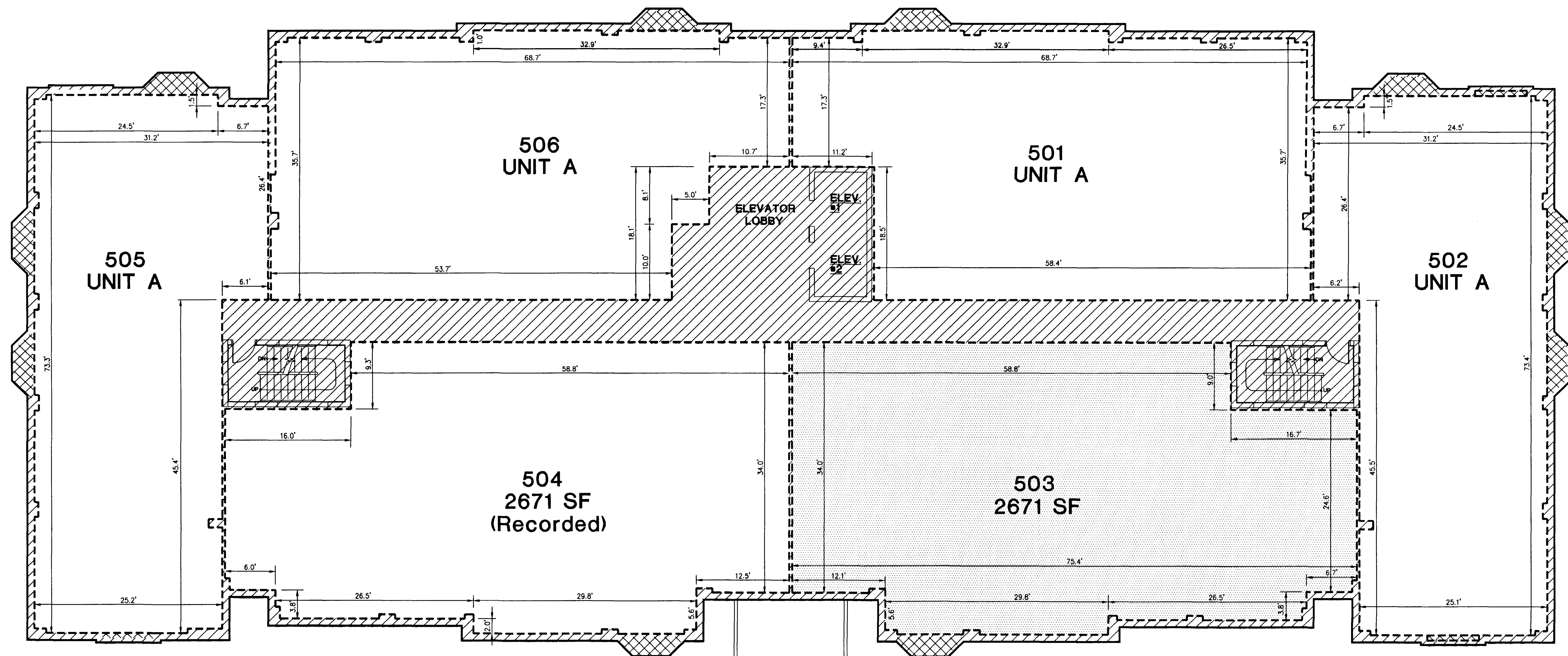


S.M. 29-057

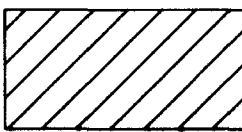
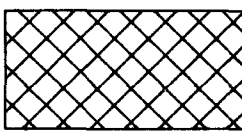
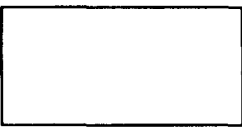
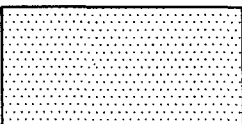
20 FOLIO 057

PLAT RECORD
DEC 28 2004

p101843 MSA SSU 1265-1521-1 29/57



LEGEND

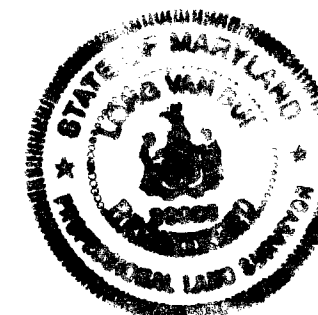
-  DENOTES COMMON ELEMENTS
-  DENOTES LIMITED COMMON ELEMENTS
-  DENOTES CONDOMINIUM UNIT
-  DENOTES NUMBERED UNITS SUBDIVIDED FROM UNIT A BY THIS PLAT

NOTE:
Limited Common Elements on this Sheet are bay windows or box windows, and are appurtenant only to the Unit which they are located.

**FIFTH FLOOR PLAN
7902 Brynmor Court**

NOTE: ALL DIMENSIONS ARE FROM FACE OF BARE STUD.

Prepared by:
LONG VAN BUI
Professional Land Surveyor
9243 Belbeck Road
Baltimore, MD 21234
Phone: 410-661-3286
Cell: 410-262-5467
Fax: 410-668-3282
Email: lvbco@aol.com



**Units 503, 603
and Unit A of 7902 Brynmor Court**
STEVENSON COMMONS CONDOMINIUM
PHASE 4 - BUILDING B

3RD ELECTION DISTRICT
SCALE: 1"=8'

BALTIMORE COUNTY, MARYLAND
DATE: DECEMBER 3, 2004

OWNER:
Stevenson Commons, LLC
Deed 16583-383

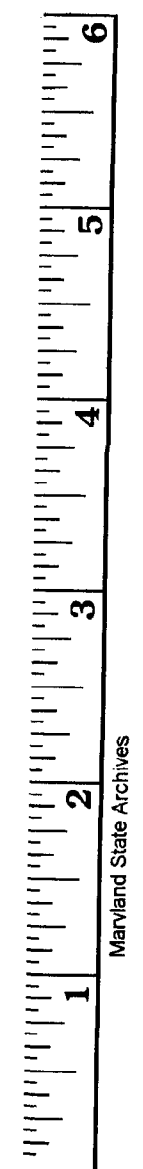
DRAWING NO.

C-37

STEVENSON-FLOORPLANS.DWG

S.M. 29-058

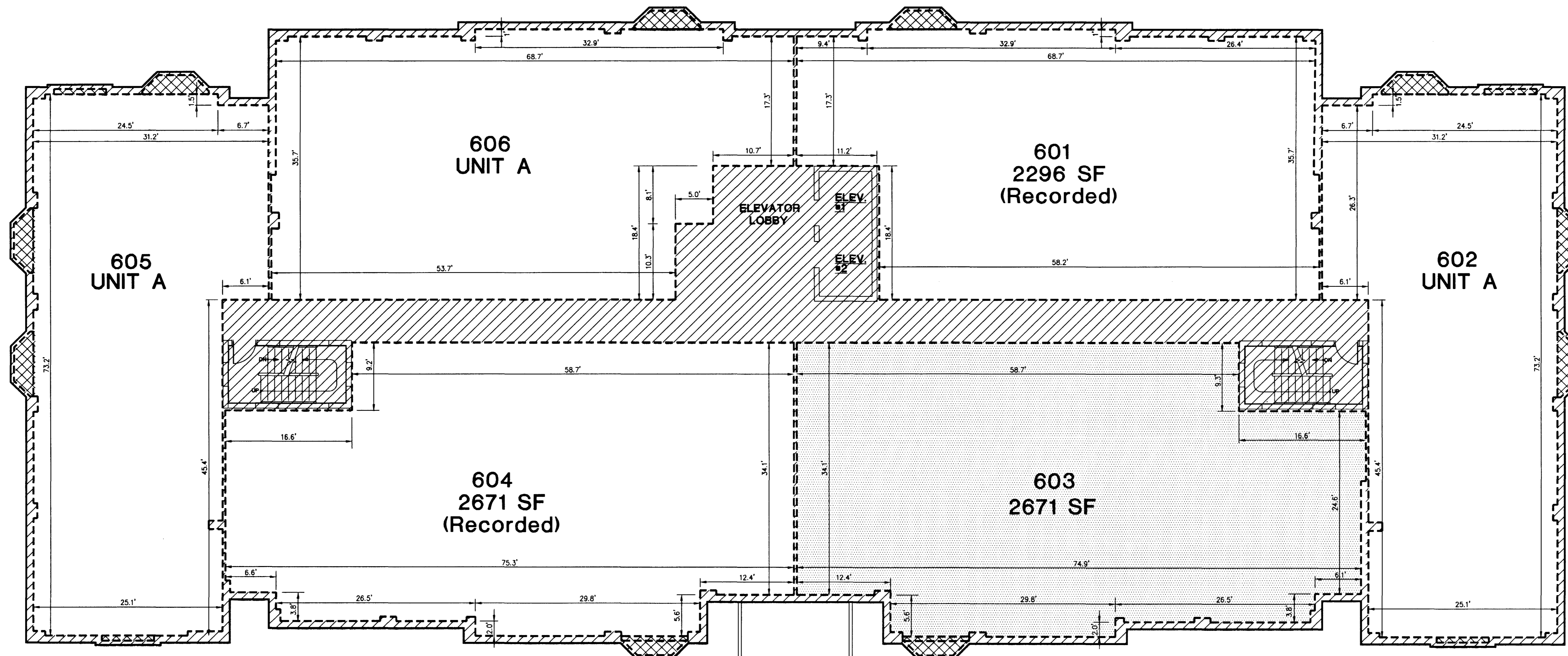
PLAT RECORDING
TOTAL
NEW DASH
ST. CL.
DATE: 12/3/04 11:29 AM



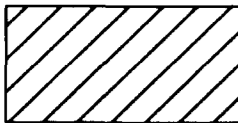

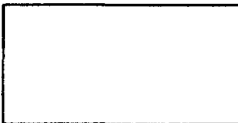
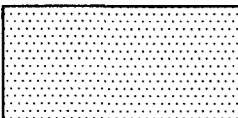
12-2-04

P101844 MSA SSU 005-165-1521-2

29/59



LEGEND

-  DENOTES COMMON ELEMENTS
-  DENOTES LIMITED COMMON ELEMENTS
-  DENOTES CONDOMINIUM UNIT
-  DENOTES NUMBERED UNITS TO BE RECORDED BY THIS PLAT

NOTE:
Limited Common Elements on this Sheet are bay windows or box windows, and are appurtenant only to the Unit which they are located.

**SIXTH FLOOR PLAN
7902 Brynmor Court**

NOTE: ALL DIMENSIONS ARE FROM FACE OF BARE STUD.

Prepared by:
LONG VAN BUI
Professional Land Surveyor
9243 Bellbeck Road
Baltimore, MD 21234
Phone: 410-661-3286
Cell: 410-262-5467
Fax: 410-668-3282
Email: lvbco@aol.com



**Units 503, 603
and Unit A of 7902 Brynmor Court**
STEVENSON COMMONS CONDOMINIUM
PHASE 4 - BUILDING B

3RD ELECTION DISTRICT
SCALE: 1"=8'

BALTIMORE COUNTY, MARYLAND
DATE: DECEMBER 3, 2004

OWNER:
Stevenson Commons, LLC
Deed 16583-383

DRAWING NO.

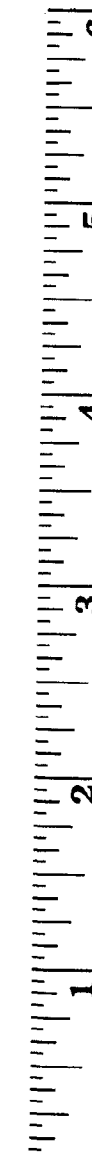
C-38

STEVENSON-FLOORPLANS.DWG

PLAT RECORDED 15.00
TOTAL 15.00
NEW PAGE 15.00
BY: JLB
DATE: 28-2004 12:00

S.M. 29-059

2-059



29-12-04

p101845

MSA SSU 1265-1521-3

29/59