

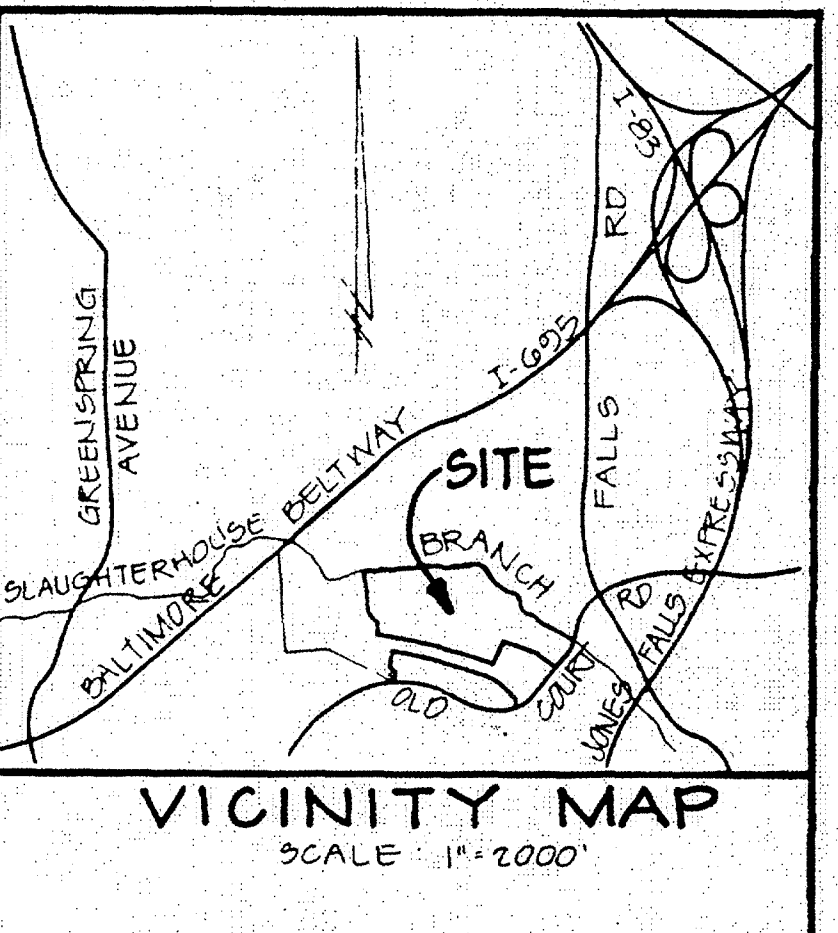
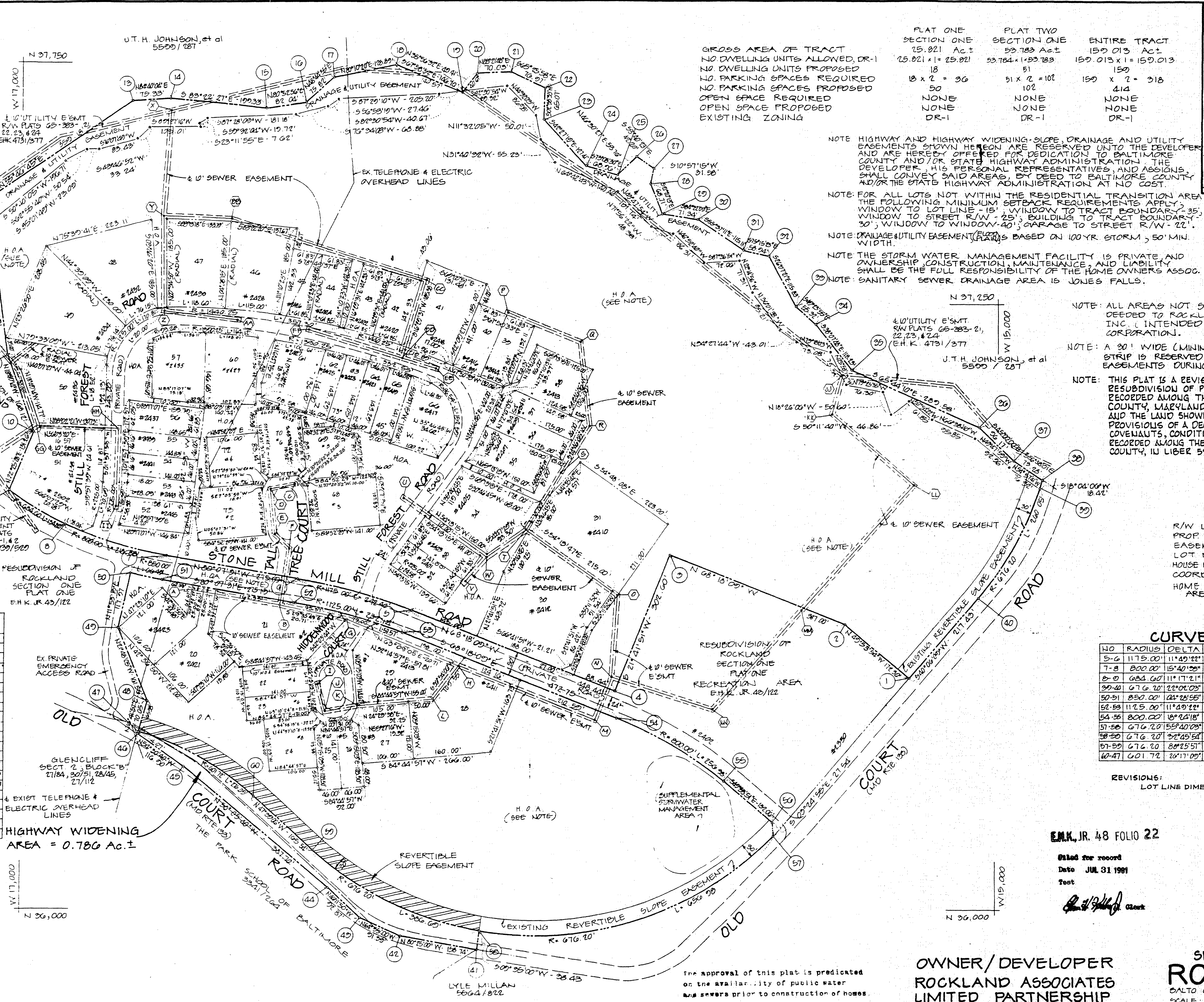
COORDINATE SCHEDULE

Table with 4 columns: NO, NORTH, WEST, WEST. Rows 1-60 listing coordinate points for the site boundary.

SEWER EASEMENT CENTERLINE table with columns: NO, BEARING, DIST, NO, BEARING, DIST. Rows 1-17 listing easement details.

SEWER EASEMENT CENTERLINE table continuation with rows 18-30.

NOTES section containing coordinate and street information.



NOTE: ALL AREAS NOT SHOWN AS INDIVIDUAL LOTS TO BE DECEDED TO ROCKLAND HOMEOWNERS ASSOCIATION INC. INTENDED TO BE A NON-PROFIT MEMBERSHIP CORPORATION.

NOTE: THIS PLAT IS A REVISION OF A PLAT ENTITLED 'THIRD REVISION OF PLAT TWO, SECTION ONE, ROCKLAND COUNTY, MARYLAND PLAT BOOK E.H.K. 148, FOLIO 53 AND THE LAND SHOWN HEREON IS SUBJECT TO THE PROVISIONS OF A DECLARATION AND AGREEMENT OF COVENANTS, CONDITIONS AND RESTRICTIONS OF ROCKLAND COUNTY, IN LIBER 5967, FOLIO 434.'

LEGEND table with columns: LINE TYPE, DESCRIPTION. Lists symbols for R/W line, easements, lot numbers, etc.

CURVE DATA table with columns: NO, RADIUS, DELTA, LENGTH, TANGENT, CHORD BEARING, DIST. Rows 1-10 listing curve data.

REVISIONS: LOT LINE DIMENSIONS LOTS 68 & 69.

EMK, JR. 48 FOLIO 22. Dated for record JUL 31 1981. FOURTH REVISION OF PLAT TWO SECTION ONE ROCKLAND.

NOTE: COORDINATES AND BEARINGS SHOWN ON THIS PLAT ARE REFERRED TO THE SYSTEM OF COORDINATES ESTABLISHED IN THE BALTIMORE COUNTY METROPOLITAN DISTRICT AND ARE BASED ON THE FOLLOWING TRAVELER STATIONS.

NOTE: THE STREETS AND/OR ROADS AS SHOWN HEREON AND THE MENTION THEREIN IN DEEDS ARE FOR THE PURPOSE OF DESCRIBING ONLY AND THE SAME ARE NOT INTENDED TO BE DEDICATED TO PUBLIC USE.

NOTES: THE UNDERSIGNED OWNER OF THE LAND SHOWN ON THIS PLAT HEREBY CERTIFIES THAT TO THE BEST OF HIS KNOWLEDGE...

NOTES: THE UNDERSIGNED A REGISTERED LAND SURVEYOR OF THE STATE OF MARYLAND DOES HEREBY CERTIFY THAT HE IS THE SURVEYOR WHO PREPARED THIS PLAT...

APPROVED BY BALTIMORE COUNTY HEALTH DEPARTMENT and BALTIMORE COUNTY PLANNING BOARD.

APPROVED BY BALTIMORE COUNTY HEALTH DEPARTMENT and BALTIMORE COUNTY PLANNING BOARD.

APPROVED AS TO ALIGNMENTS AND LOCATION OF STREETS BY BALTIMORE COUNTY PLANNING BOARD.

APPROVED AS TO ALIGNMENTS AND LOCATION OF STREETS BY BALTIMORE COUNTY PLANNING BOARD.

OWNER/DEVELOPER ROCKLAND ASSOCIATES LIMITED PARTNERSHIP. CIVIL ENGINEERS & LAND SURVEYORS.

GEORGE WILLIAM STEPHENS, JR. AND ASSOCIATES, INC. TOWSON, MARYLAND 21204. BEL AIR, MARYLAND 21014.

PLANNING ENGINEERING DATE: 7/24/81. P.W.A. COMPLETED 37802 DNL. FINAL PLAT CHECKED: [Signature]. ENGINEERING DATE: 7/22/81.



BALTIMORE COUNTY CIRCUIT COURT (Subdivision Plats, BA) Plat Book E.H.K., Jr., 48, p. 22, MSA, 51236, 6854. Date available 1981/07/31. Printed 02/20/2025.

448-22



